



SEA®
Sistemi Elettronici
di Apertura Porte e Cancelli
International registered trademark n. 804888

SEA S.r.l.
DIREZIONE E STABILIMENTO:
Zona industriale 64020 S.ATTO Teramo - (ITALY)
Tel. 0861 588341 r.a. Fax 0861 588344



<http://www.seateam.com>
e-mail: seacom@seateam.com (Ufficio Comm.le)
seatec@seateam.com (Ufficio Tecnico)



HALF TANK

SBLOCCO ESTERNO / EXTERNAL RELEASE / DEVERROUILLAGE EXTERIEUR / DESBLOQUEO EXTERNO / AUSSENENTRIEGELUNG

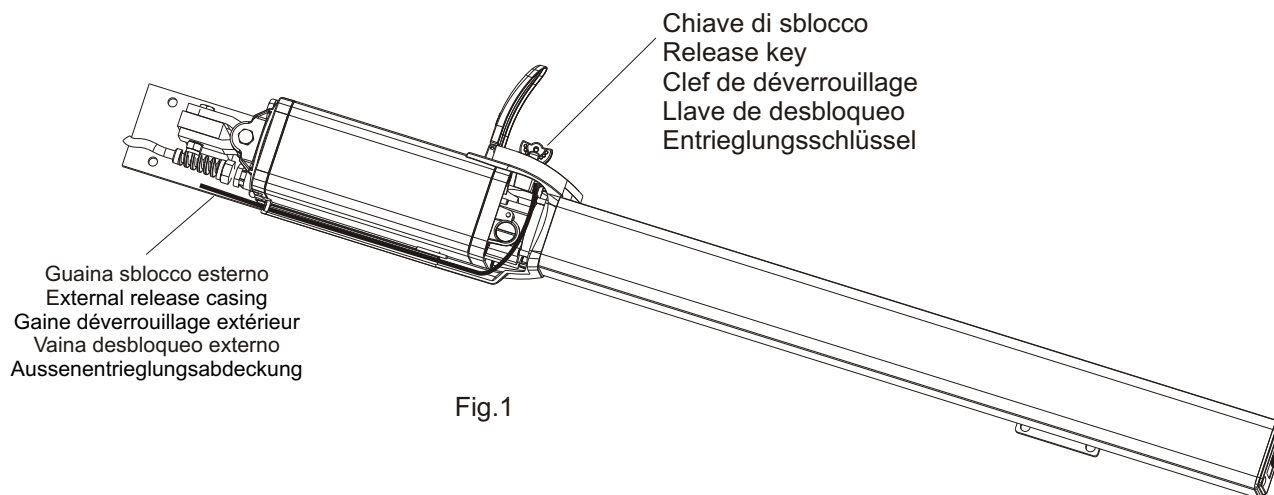


Fig.1

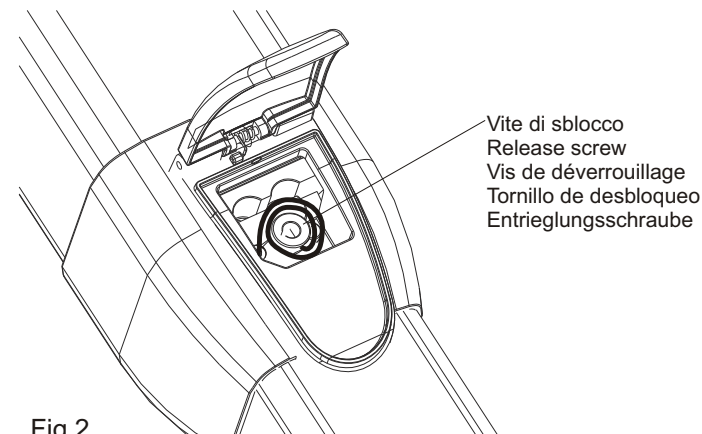


Fig.2

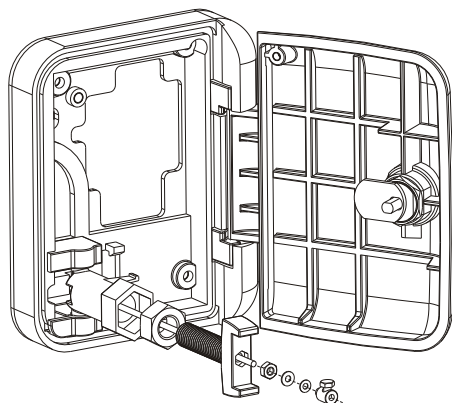


Fig.3

- I** Solo per sbloccare, per ribloccare bisogna agire sulla vite di sblocco dell'attuatore con l'apposita chiave di sblocco
- GB** Only to release, to relock use the release screw of the motor with special release key.
- F** Seulement pour déverrouiller, pour ré-bloquer utiliser la vis de déverrouillage du moteur avec la clef spéciale de déverrouillage.
- E** Solo para desbloquear, para rebloquear hay que obrar sobre el tornillo de desbloqueo del actuador con la especial llave de desbloqueo.
- D** Nur zur Entriegelung, um wieder zu blockieren benutzen sie die Entriegungsschraube des Antriebs mit dem dafür vorgesehenen Entriegungsschlüssel.

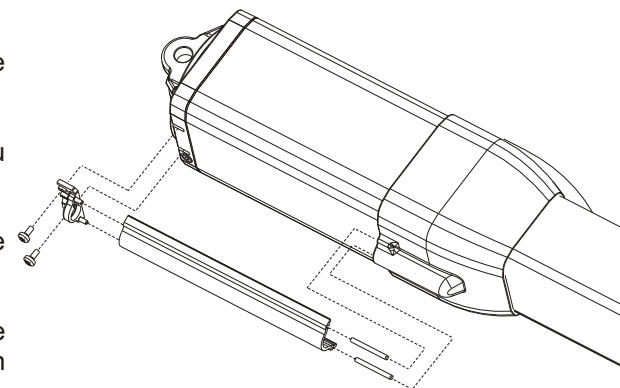


Fig.4