



SEA[®]
Sistemi Elettronici
di Apertura Porte e Cancelli
International registered trademark n. 854388

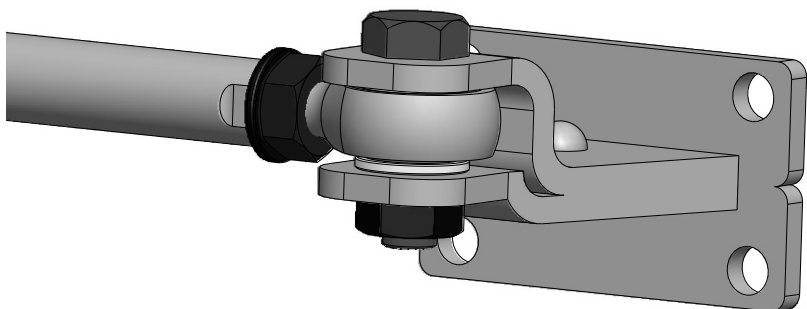
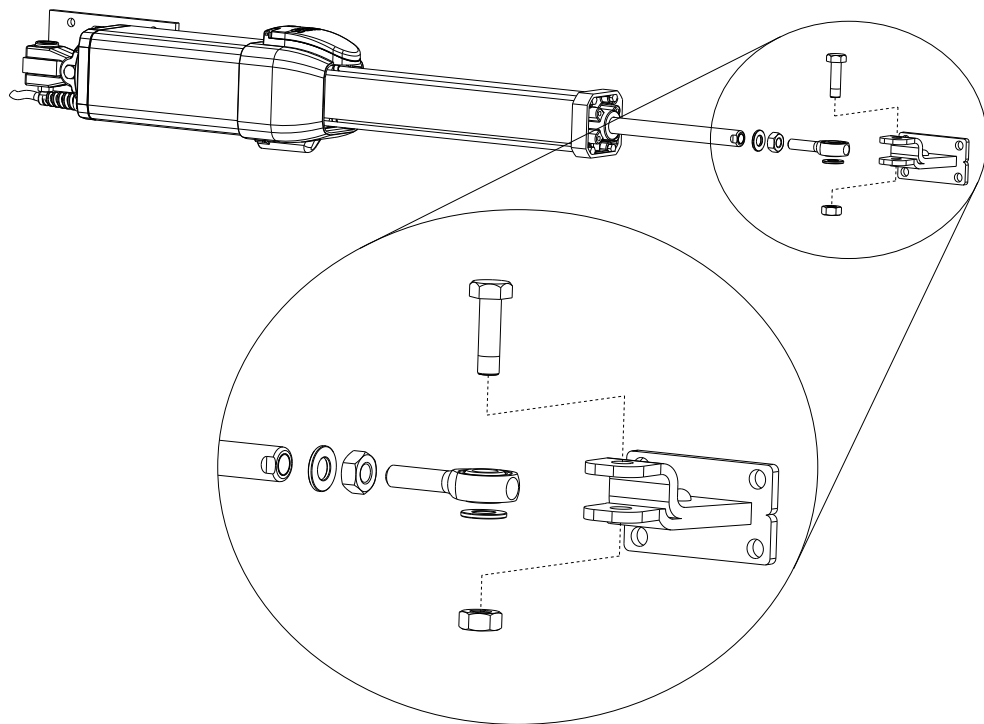
SEA S.r.l.
DIREZIONE E STABILIMENTO:
Zona industriale 64020 S.ATTO Teramo - (ITALY)
Tel. +39 0861 588341 r.a. Fax +39 0861 588344



<http://www.seateam.com>
e-mail: seacom@seateam.com (Uff. Comm.le)
seamec@seateam.com (Uff. Tecnico)



MONTAGGIO ATTACCO ANTERIORE CON SNODO
ASSEMBLING OF FRONT FIXATION WITH JOINT
MONTAGE FIXATION ANTÉRIEURE AVEC ARTICULATION SPHÉRIQUE
MONTAJE ANCLAJE ANTERIORE CON ARTICULACIÓN DE NUEZ
MONTAGE VORDERBEFESTIGUNG MIT GELENK



67411240

Rev.00 - 05/2011



SEA[®]
Sistemi Elettronici
di Apertura Porte e Cancelli
International registered trademark n. 854388

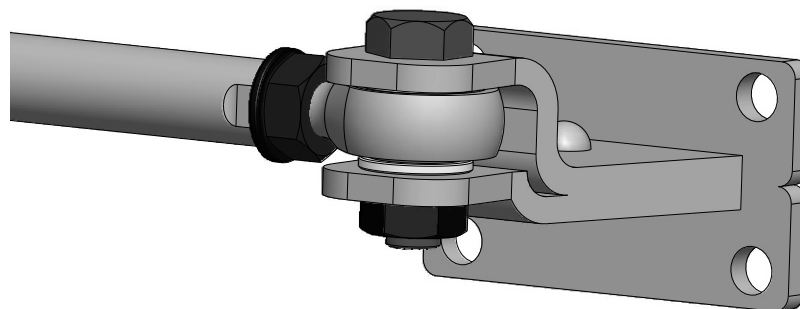
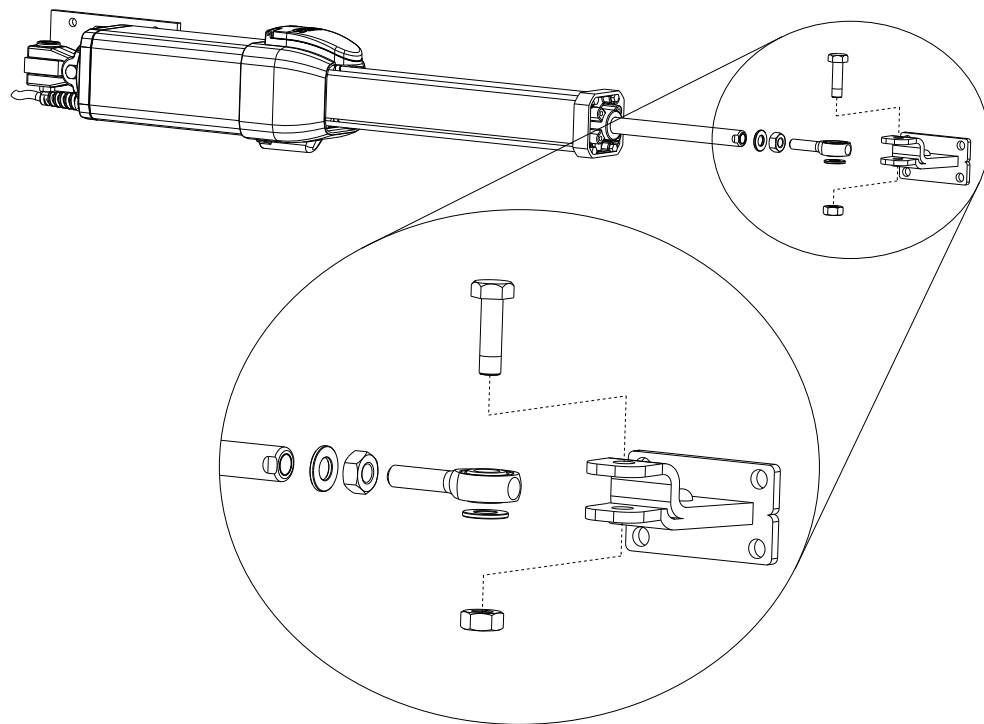
SEA S.r.l.
DIREZIONE E STABILIMENTO:
Zona industriale 64020 S.ATTO Teramo - (ITALY)
Tel. +39 0861 588341 r.a. Fax +39 0861 588344



<http://www.seateam.com>
e-mail: seacom@seateam.com (Uff. Comm.le)
seamec@seateam.com (Uff. Tecnico)



MONTAGGIO ATTACCO ANTERIORE CON SNODO
ASSEMBLING OF FRONT FIXATION WITH JOINT
MONTAGE FIXATION ANTÉRIEURE AVEC ARTICULATION SPHÉRIQUE
MONTAJE ANCLAJE ANTERIORE CON ARTICULACIÓN DE NUEZ
MONTAGE VORDERBEFESTIGUNG MIT GELENK



67411240

Rev.00 - 05/2011