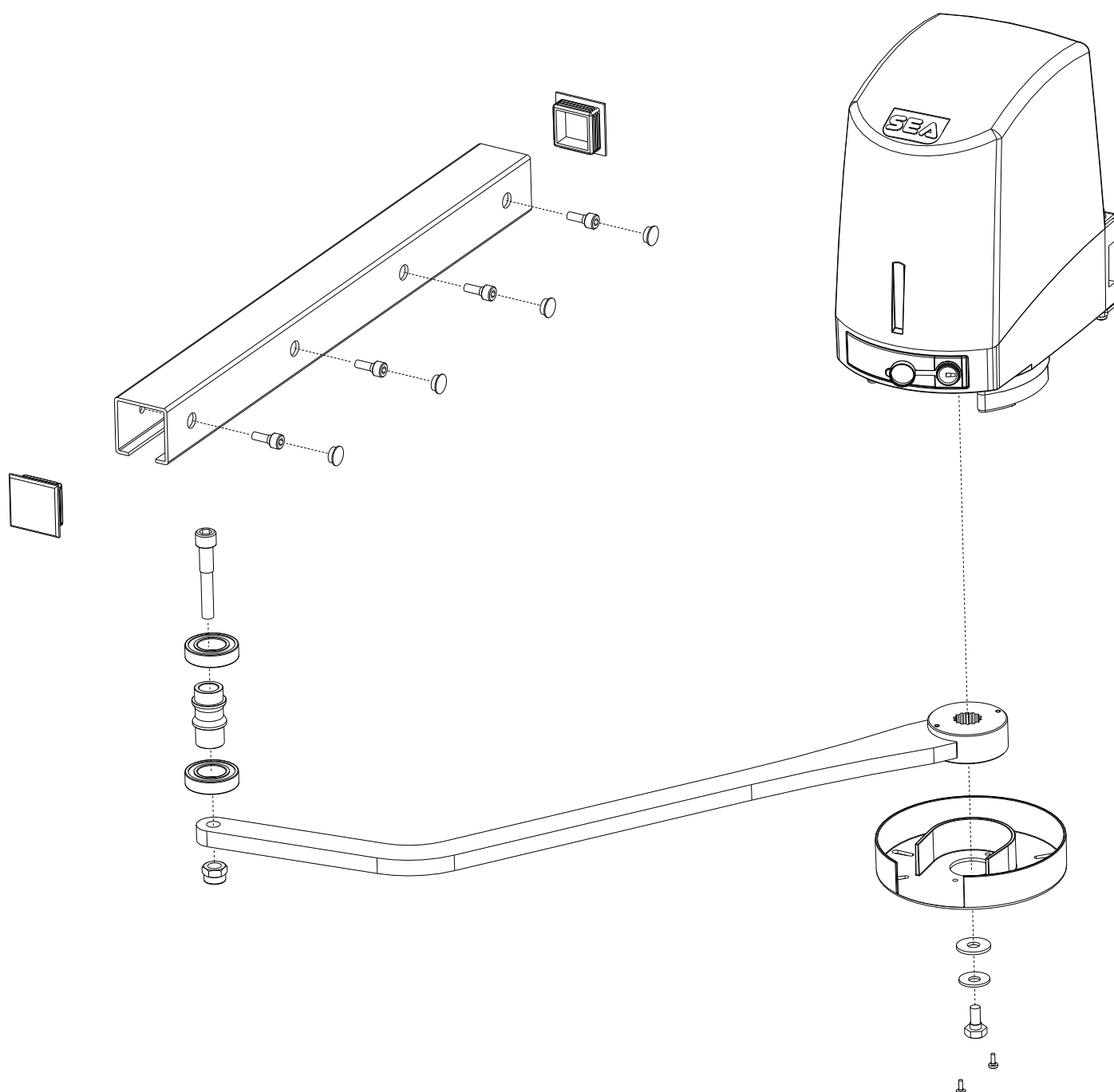




SEA[®]
Sistemi Elettronici
di Apertura Porte e Cancelli
International registered trademark n. 804888



BRACCIO SORREVOLE
SLIDING ARM
BRAS COULISSANT
BRAZO CORREDIZO
SCHIEBEARM
FLIPPER



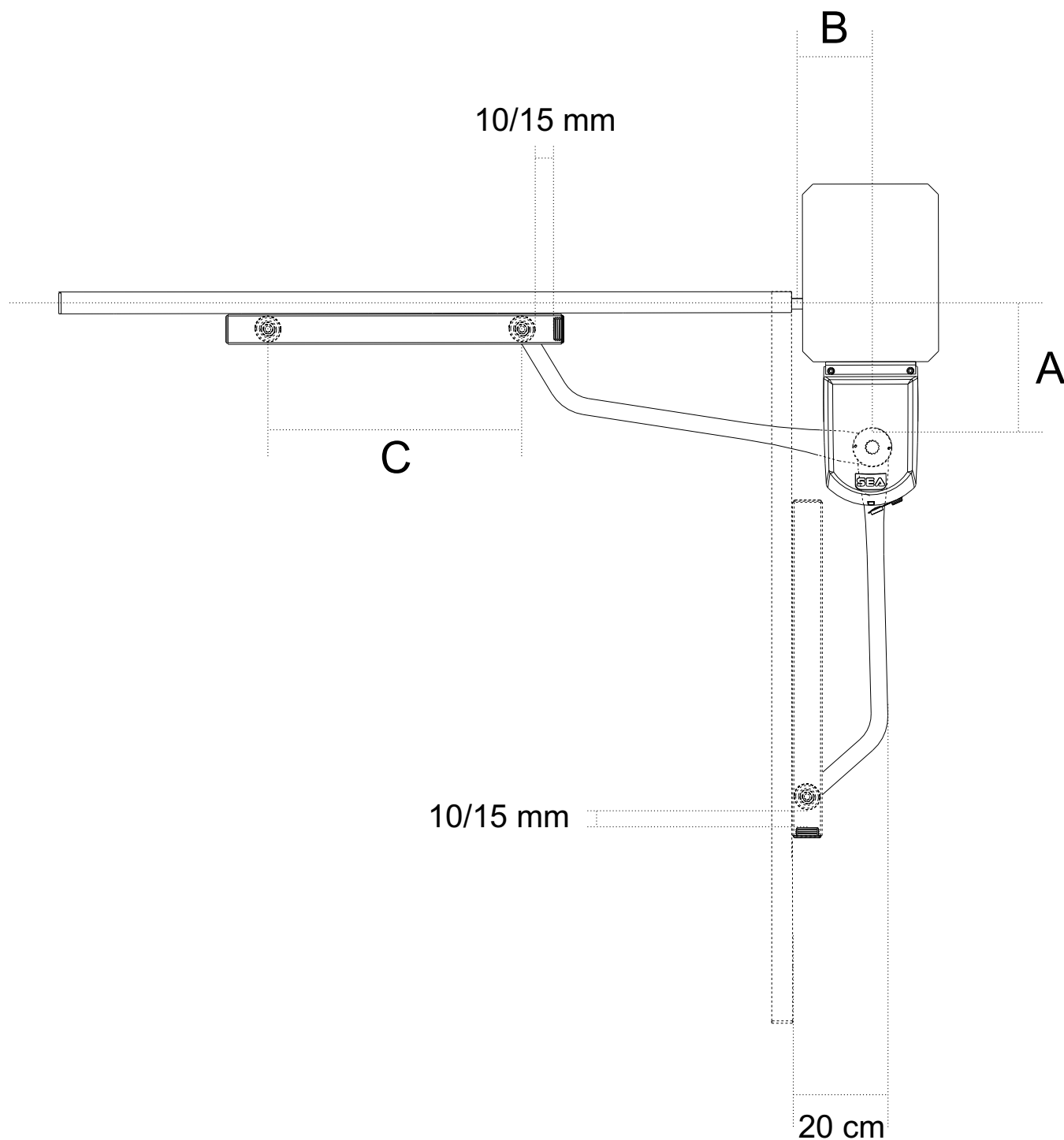


SEA®
Sistemi Elettronici
di Apertura Porte e Cancelli
International registered trademark n. 804888



SEA S.r.l.
DIREZIONE E STABILIMENTO:
Zona industriale 64020 S.ATTO Teramo - (ITALY)
Tel. 0861 588341 r.a. Fax 0861 588344

<http://www.seateam.com>
e-mail: seacom@seateam.com (Uff. Comm.le)
seatec@seateam.com (Uff. Tecnico)



Per un'apertura di 90° / For a 90° opening / Pour une ouverture de 90° / Por una abertura de 90° /
Fuer eine 90° Oeffnung:
A + B = C

Per un'apertura di 110° / For a 110° opening / Pour une ouverture de 110° / Por una abertura de 110° /
Fuer eine 110° Oeffnung:
A + B + 45mm = C

C utile / C useable / C practicable / C útil / C nutzbar:
600 mm