



ADAPTER FIELD 180°

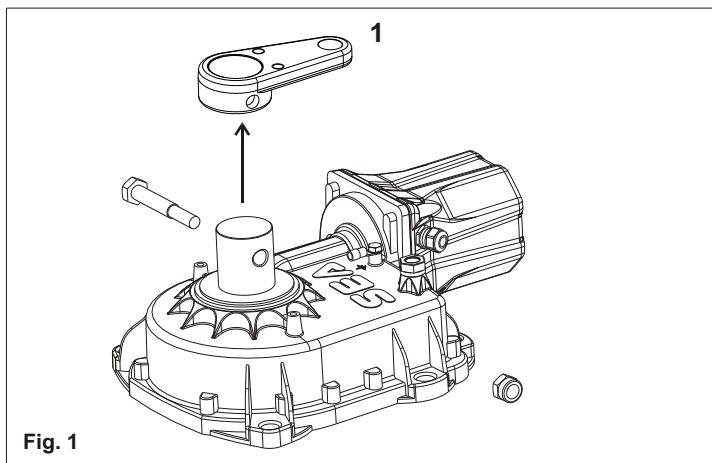


Fig. 1

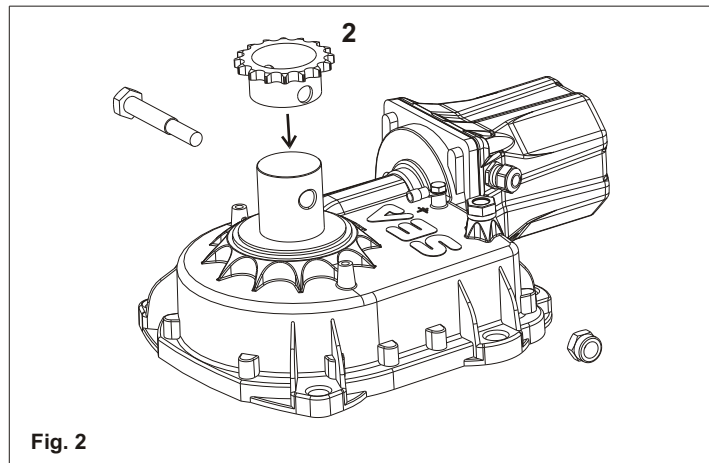


Fig. 2

Replace piece 1 of Fig. 1 with piece 2 of Fig. 2.

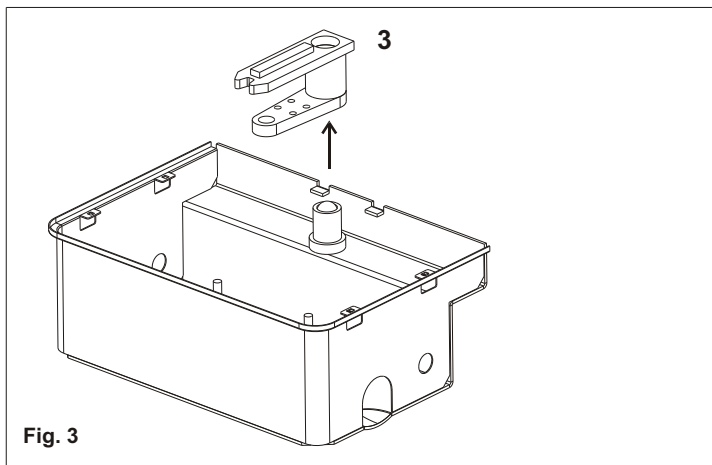


Fig. 3

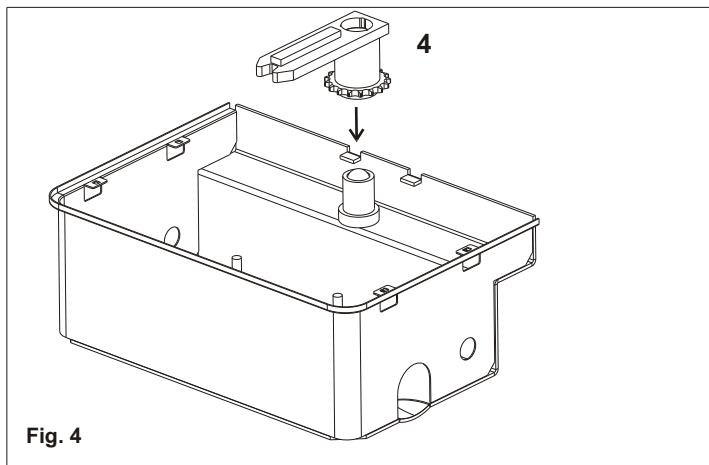


Fig. 4

Replace piece 3 of Fig. 3 with piece 4 of Fig. 4

N.B.: During the insertion of the units lubricate them with the supplied grease (Fig.3, Fig.4).
When putting in function the installation it is peremptory to lubricate the box as in Fig. 5 until the grease comes out. (Use grease type DIN 51502 KP 2 N-20 - K 2 K-20).

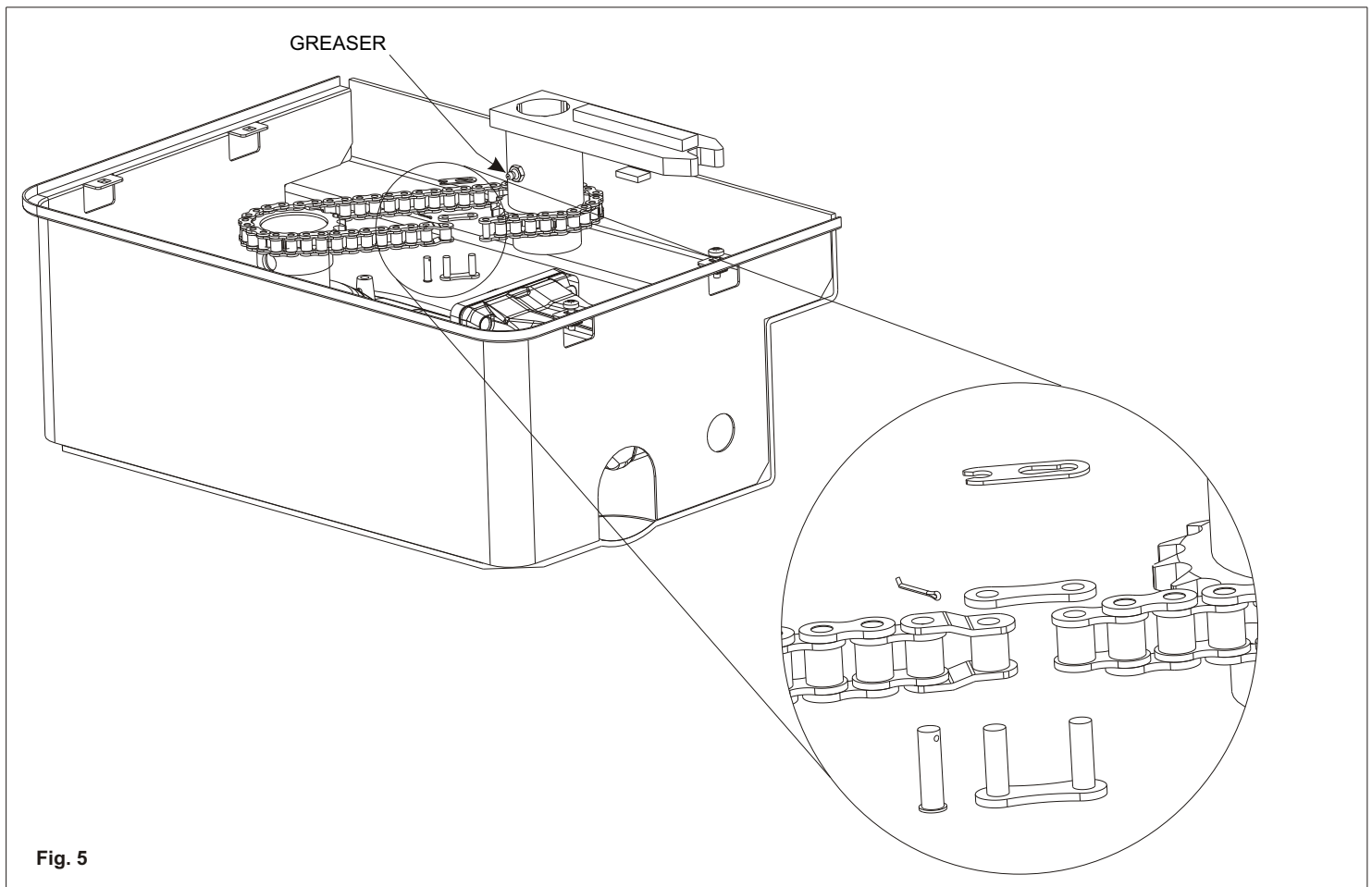


Fig. 5

N.B.: Installing the 180° adapter with chain transmission it is not possible anymore to use the mechanical stop adjustable in opening and closing.

After having replaced the components on both the motor and the box (Fig. 1 - 2 - 3 - 4) install the motor into the foundation box following its mounting instructions.

At last connect the two pinions with the chain and close them with the provided special joints (Fig. 5).

Note: Max. Leaf length 2 m