

Automatic Gate Openers

# EASY 20

# EASY 30

**GB**

**TUBULAR MOTORS WITH MECHANICAL LIMIT SWITCH**

Fig. 1

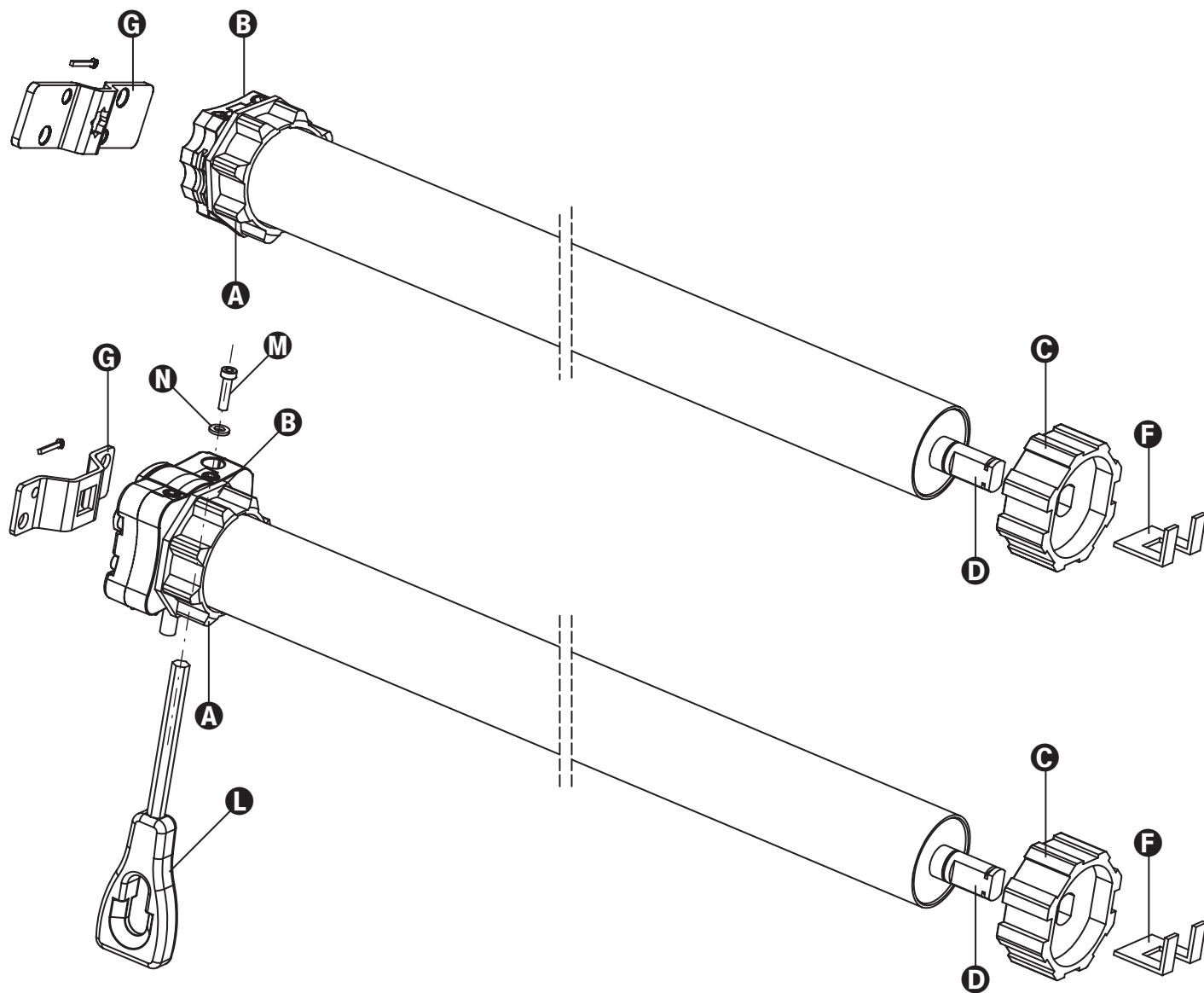


Fig. 2

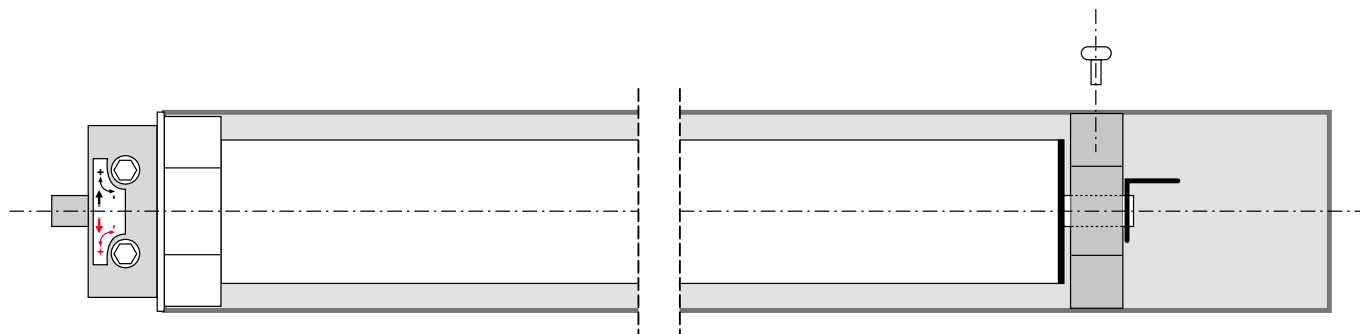
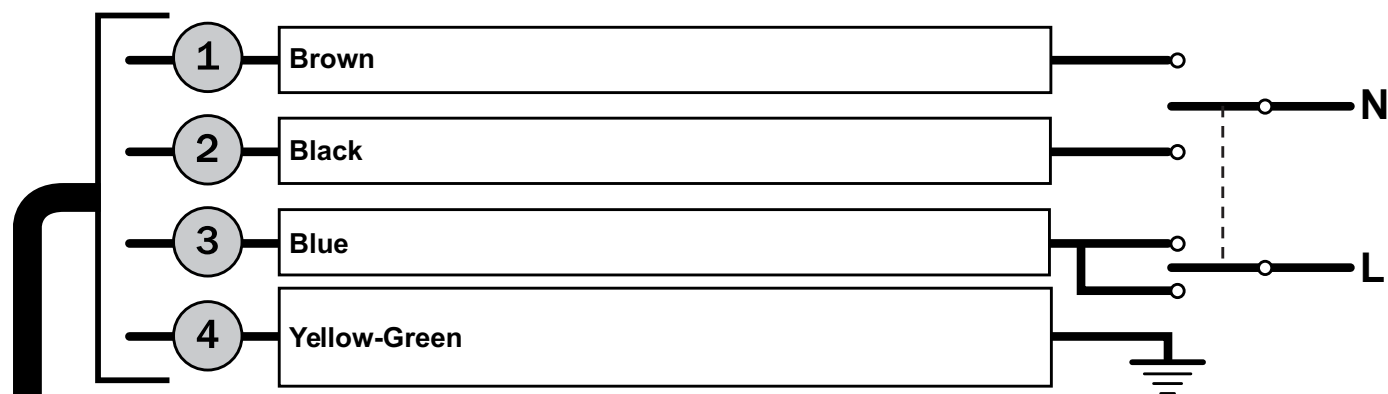
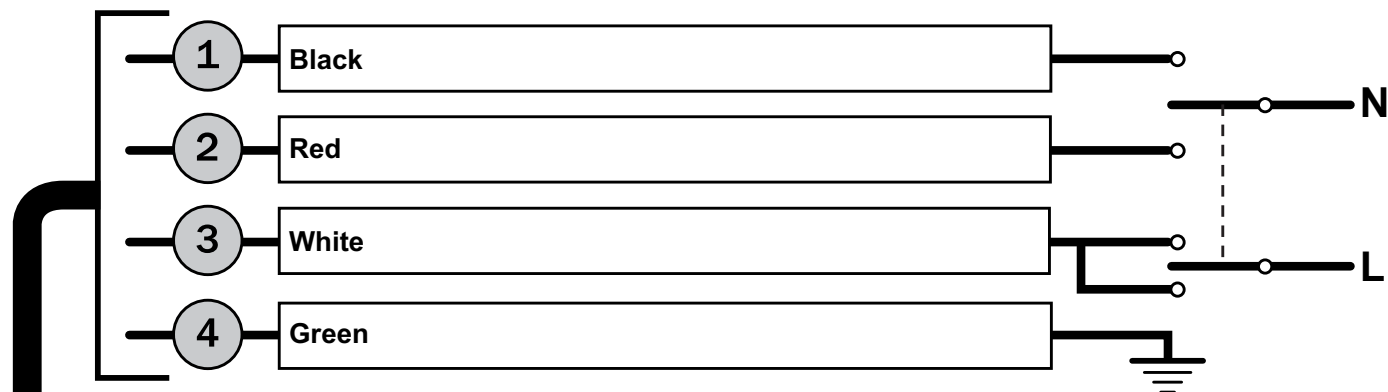


Fig. 3



**230V model**



**120V model**

Fig. 4

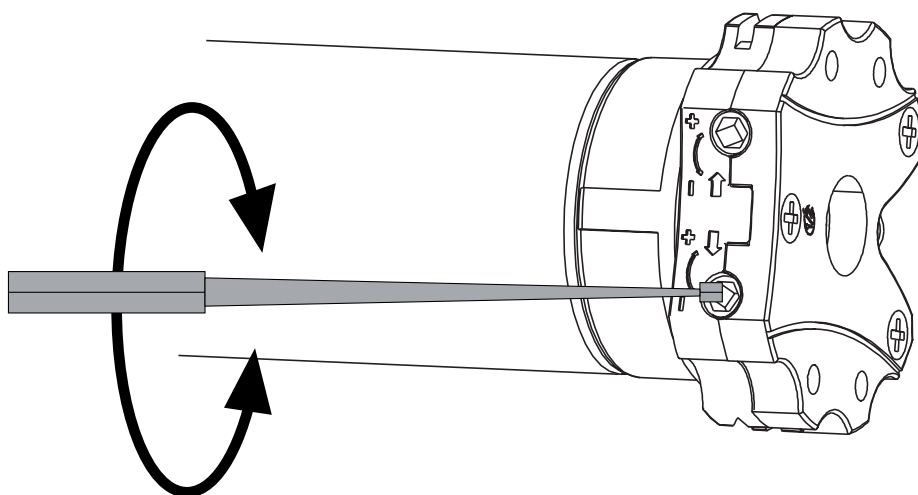
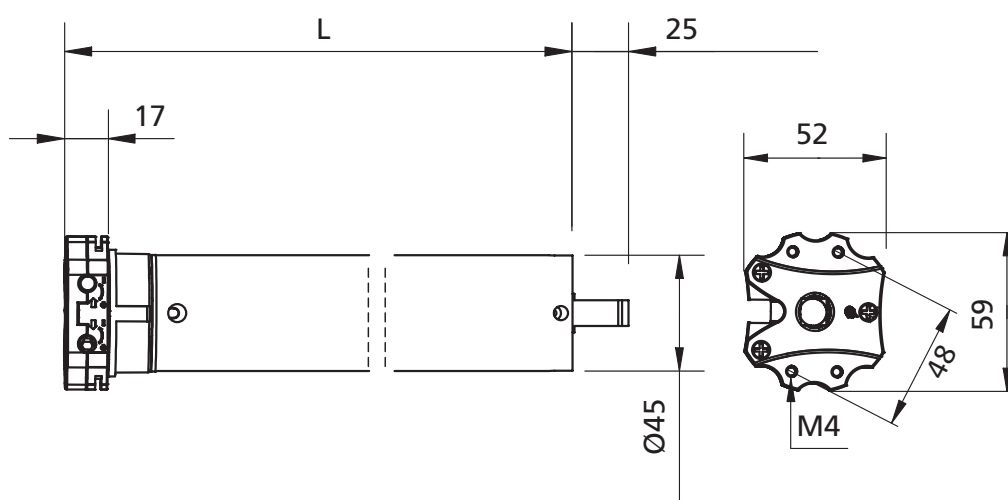
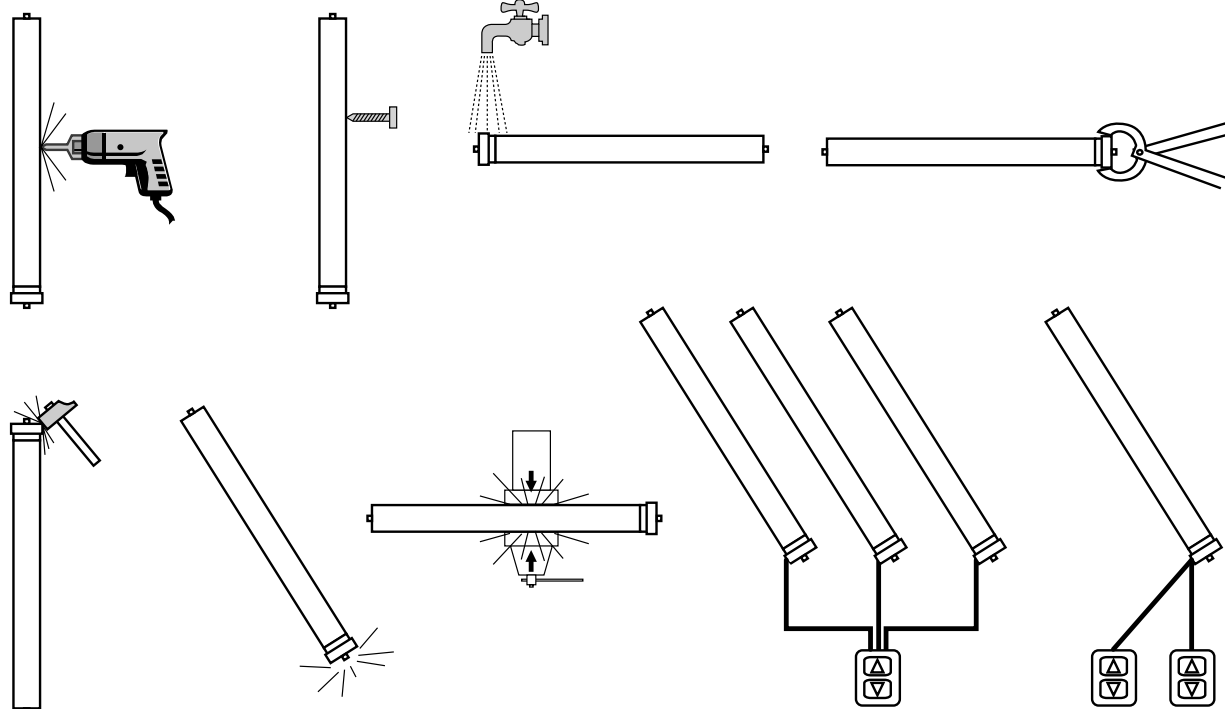


Fig. 5



**NO! NEVER!**



**EASY**

Model	load*	torque	speed	power supply	power	working time	limit switch range	protection	length (L)
	Kg	Nm	rpm	V/Hz	W	min.	n°	IP	mm
* Value calculated with roller Ø 50 mm									
EASY 20-230V	35	20	15	230/50	145	4	22	44	450
EASY 30-230V	55	30	15	230/50	191	4	22	44	480

# **EU DECLARATION OF CONFORMITY AND DECLARATION OF INCORPORATION FOR PARTLY COMPLETED MACHINERY**

**Declaration in accordance with the Directives: 2014/35/UE (LVD); 2014/30/UE (EMC); 2006/42/EC (MD) APPENDIX II, PART B**

The manufacturer SEA S.p.A., headquarters in  
Zona Industriale Sant'Atto - 64100 - Teramo - Italy

Under its sole responsibility hereby declares that:  
the partly completed machinery model(s):

- **EASY 20 230V - EASY 30 230V**

Description: electromechanical actuator for awnings and rolling shutters

- is intended to be installed on awnings and rolling shutters to create a machine according to the provisions of the Directive 2006/42/EC. The machinery must not be put into service until the final machinery into which it has to be incorporated has been declared in conformity with the provisions of the Directive 2006/42/EC (annex II-A).
- is compliant with the applicable essential safety requirements of the following Directives:  
Machinery Directive 2006/42/EC (annex I, chapter 1)  
Low Voltage Directive 2014/35/EU  
Electromagnetic Compatibility Directive 2014/30/EU  
Directive RoHS-3 2015/863/EU


The relevant technical documentation is available at the national authorities' request after justifiable request to:  
SEA S.p.A., Zona Industriale Sant'Atto - 64100 - Teramo - Italy

The person empowered to draw up the declaration and to provide the technical documentation:

**Ennio Di Saverio**

Legal representative of SEA S.p.A.  
Teramo, 2022/07/12

L'Amministratore  
The Administrator  
Ennio Di Saverio



## **⚠ IMPORTANT REMARKS**

- Please read the instruction carefully before installation
- Follow all instructions, since incorrect installation can lead to severe injury
- The installation must be done by a technician following the safety norms in force
- Only apply to authorized personnel to replace the feeding cable of the motor
- Do not pierce nor insert screws in the whole length of the motor
- Avoid any contact of the motor with liquids
- Avoid to crush or knock over the motor
- Possible tampering or wrong connections are not covered by guarantee
- If a manual release is provided, the actuating member is to be installed at a height less than 1,8m
- Before installing the drive, remove any unnecessary cords and disable any equipment not needed for powered operation.

- For installation for awnings, a horizontal distance of at least 0,4 m is to be maintained between the fully unrolled driven part and any permanent object
- The power supply cable should not be exposed to sunlight or rain directly
- Assure that all accessories have been fixed so that the motor works without any mechanical problem. The loading weight should be matched with the output power of the motor
- Electrical connection must be done by professional technicians to operate in conformity with the rules
- Do not allow children to play with fixed controls
- Keeps remote controls away from children
- Frequently examine the installation for imbalance and sings of wear or damage to cables and springs
- Do not use if repair or adjustment is necessary
- Moving parts of the drive must be installed higher than 2.5 m above the floor or other level that could provide access to it
- The actuating member of a biased-off switch is to be located within direct sight of the driven part but away from moving parts. It is to be installed at a minimum height of 1.5 m
- Fixed controls have to be installed visibly
- The appliance can not be used in outside

## **INSTALLATION**

- Fix the stirrup **G** to the wall.
- Insert the crown **A** in the driving wheel **B** of the limit switch (fig.1).
- Insert the pulley **C** on the pivot of the motor **D** (fig.1).
- Insert the copper pin **F** on the pulley **C**.
- ONLY for the models with emergency handling:
  - Put the eyelet L in the hole
  - Fix the eyelet with the screw M and the washer N
- Insert completely the motor in the roll-tube (fig.2).
- Fix the roll-tube to the driving wheel with m 4 x10 screw (fig.2).

## **ELECTRIC CONNECTIONS**

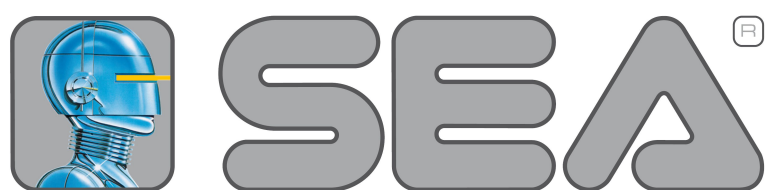
- Operators must be installed with a bipolar switch with a minimum contact clearance opening distance of at least 3mm (fig.3).
- Do not connect more than one motor for every push-button of command.
- Reverse the brown and black cables, in order to change the direction of revolution (fig.3)

## **LIMIT SWITCH ADJUSTMENT**

- The limit switches system is electromechanical and through a micro-switch it interrupts the feeding of the motor when the roller shutter or the awning reaches the limit of opening and closing.
- The limit switches are pre-adjusted to approximately 5 crown revolutions.
- To adjust the opening and closing limit is necessary to turn the adjusting screw placed on the head of the motor through the plastic screwdriver included in the box (fig.4).
- Feed the motor and observe the sense of rotation of the pulley and/or of the crown ; turn the adjusting screw towards (+) to increase the speed of the motor, turn the adjusting screw towards (-) to decrease it (fig.4).
- Reverse the direction of revolution of the motor and operate on the second limit switch (fig.4).

PROBLEMS	CAUSE	WAY
Motor doesn't run	Public electricity supply failure The switch is defective  Repeated operation may have tripped the motor overload protector switch	Check with a neighbor  Have it checked by an authorized electrician  Redistribute the load  Wait 15 min and try again
Motor runs intermittently	Have the wiring connection between switch and motor checked by an authorized electrician  To low voltage  Over loading	Replace if necessary  To rated power  Choose the relevant load to the rated torque
Motor does not shut off	Bad accessory position	Check crown/pulley fit perfectly on the tube
Motor run only one direction	The switch of position limiting of the other direction is off.  No power of the other direction	Turn the screw limit adjustement on + way  Check the wire connection





Automatic Gate Openers

**SEA S.p.A.**

Zona Industriale Sant'Atto - 64100 - Teramo - ITALY

Phone: +39 (0) 861 588 341 r.a.

<http://www.seateam.com>